



arlo™

Quick Start Guide



Welcome

Thank you for choosing Arlo.
Getting started is easy.

What's Included



Arlo Q camera



USB cable



USB power
adapter



Wall-mount
plate



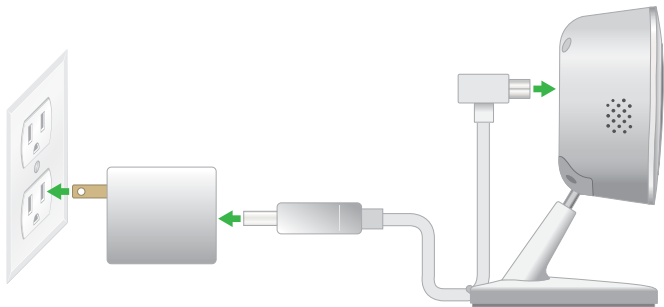
4 Mounting
screws

1 Plug In Your Camera

Connect one end of the USB cable to the port on the camera.

Plug the other end of the USB cable into the adapter.

Plug the USB adapter into a wall socket and wait for the camera LED to blink amber.



2 Get the App

For the best experience, download the Arlo app for your smartphone by scanning the QR code below or searching for "Arlo" in the app store.



<https://arlo.netgear.com>

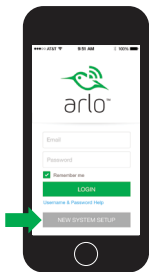
3

Get a New Account

Already have an account? See [Add Devices to an Existing Account](#) on page 8.

Launch the app from your smartphone and tap the **New System Setup** button. Follow the onscreen instructions.

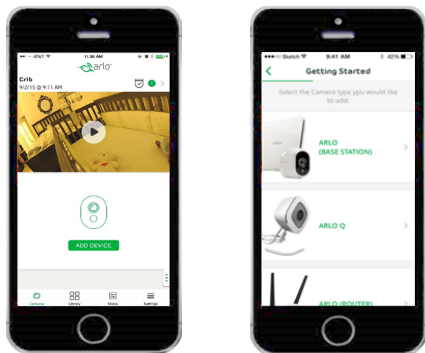
Or from a computer, visit <https://arlo.netgear.com> and click the **New System Setup** button. Select **Arlo Q**.



Add Devices to an Existing Account

Launch the Arlo app and log in to your account.

Tap the **Add Device** button, select **Arlo Q**, and follow the onscreen instructions.



4

Connect Your Camera

Follow the onscreen instructions from either the Arlo app or from a computer to connect your camera directly to your WiFi router.

Note: *If you own an Arlo Wire-free system, do not connect your Arlo Q camera to the Arlo base station.*



5 Place or Mount Your Camera

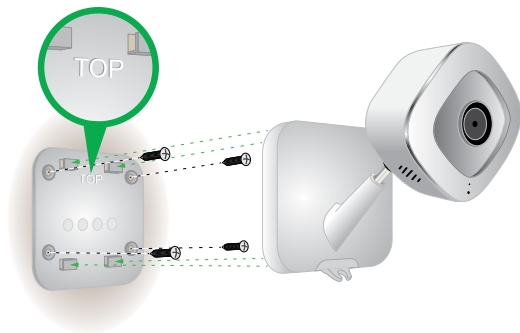
You can place your camera on a shelf or other flat surface, or you can mount it on the wall.



Note: *The camera base includes a magnet that can help position a camera on a metal surface.*

If you are mounting the camera on a wall, place the wall plate and secure it in place with four screws.

Slide the camera into the wall plate.



You're Done!

Congratulations! Your Arlo camera is set up and ready to go.

To view useful tutorial videos, find troubleshooting tips, or get support, visit <http://support.arlo.com>.

Camera LED Guide



Solid amber
The camera is booting up.

Slow blinking amber
The camera is powered on and is ready for setup.

Fast blinking amber
The camera is not connected to a WiFi network yet.

Solid blue
The camera is powered on and is connected to Arlo servers.

Slow blinking blue
The camera is connecting to a WiFi network.

Fast blinking blue
The camera is connecting to Arlo servers.

Solid purple
The camera is connected to a WiFi network however it is not connected to the Internet.

Blinking purple
The camera is too far away from the router.

Blinking blue/amber
A firmware update is in progress. DO NOT TURN OFF THE CAMERA.

Off
The camera is powered off.

Notes

Notes



©NETGEAR, Inc., NETGEAR, the NETGEAR Logo, and Arlo are trademarks of NETGEAR, Inc.

Compliance

For the current EU Declaration of Conformity, visit

http://kb.netgear.com/app/answers/detail/a_id/11621/.

For regulatory compliance information, visit

<http://www.netgear.com/about/regulatory/>.

NETGEAR®

350 East Plumeria Drive
San Jose, CA 95134, USA

November 2015



201-19255-02